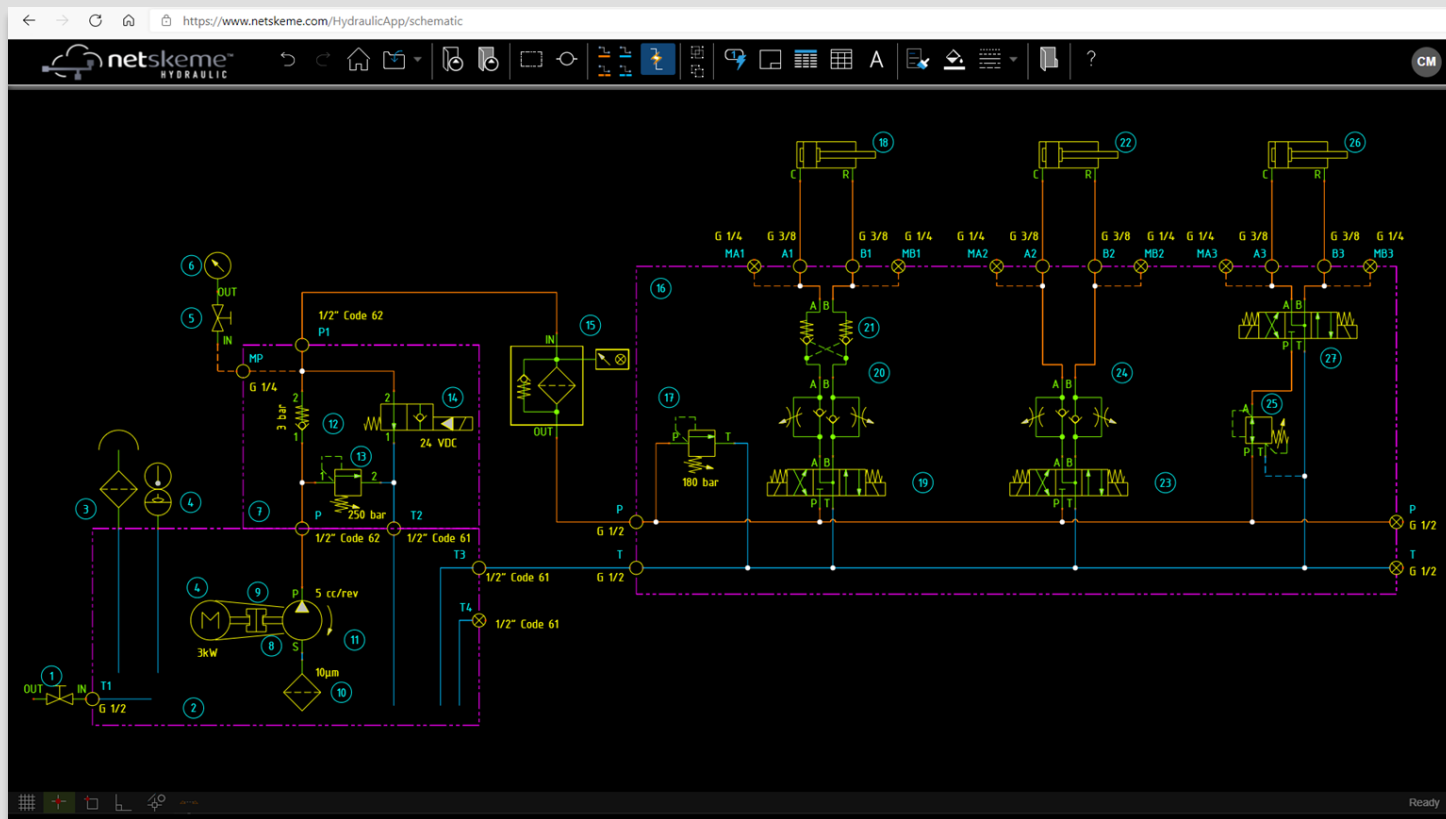


NetSkeme® April 2021

What's New



NetSkeme® What's New

Connection Line Rerouting

Flipping

Rotating

Moving

Line Spacing

Compatibility with other DWG Software

Envelope ID

Connection Lines

Enhanced Search

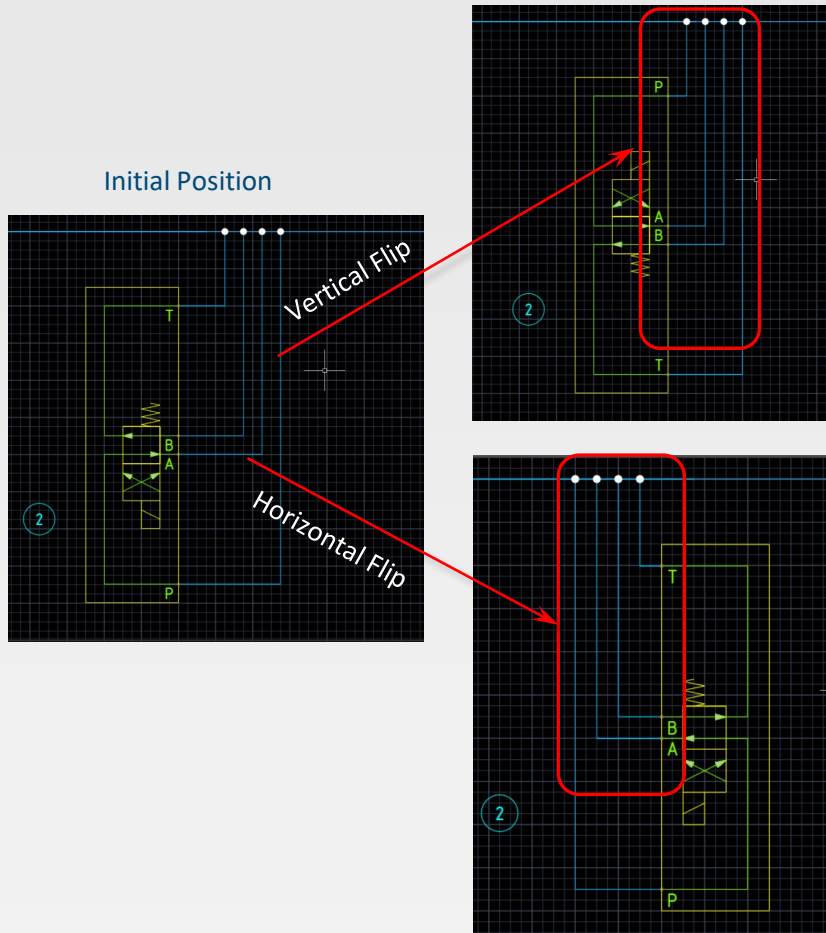
Wildcard Characters

Connection Line Rerouting

Smart Routing of Connection Lines
on moving, flipping, and rotating symbols

Flipping Symbols

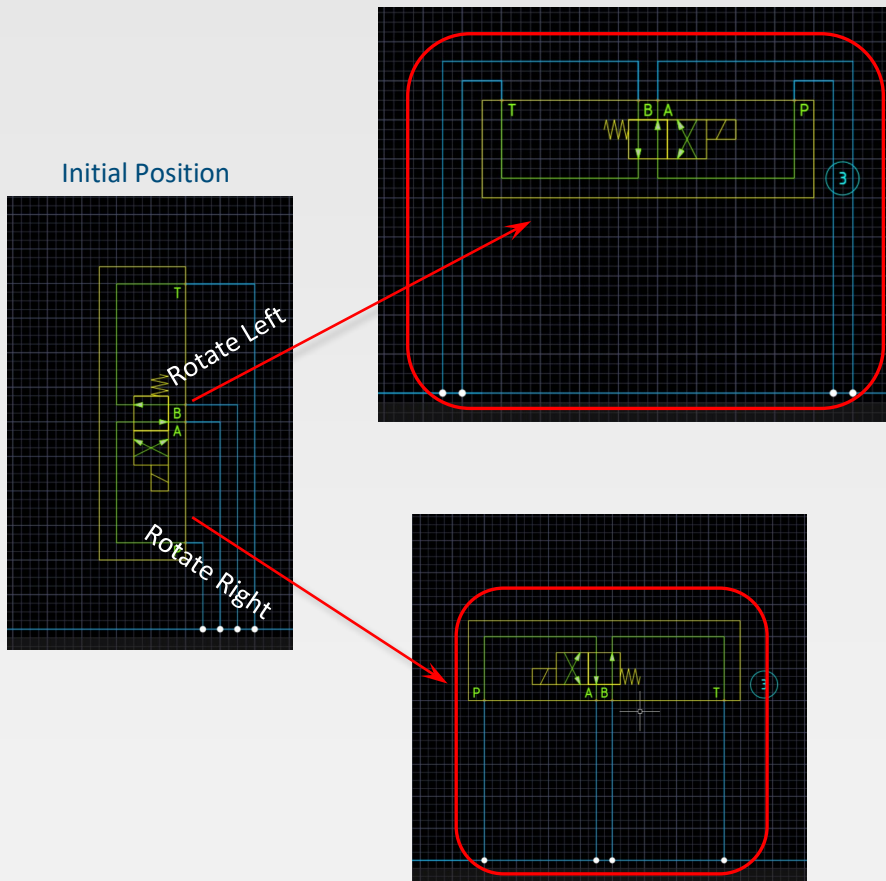
Connection Lines Rerouted on Flipping a Symbol



On flipping a symbol vertically or horizontally, connection lines reroute without overlapping.

Rotating Symbols

Connection Lines Rerouted on Rotating a Symbol

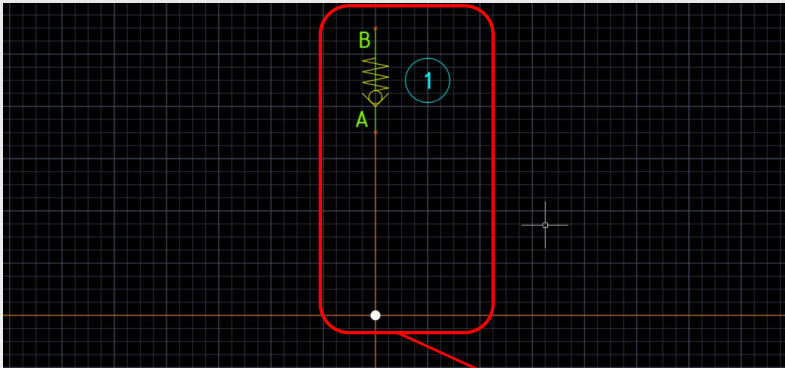


On rotating a symbol, connection lines intelligently reroute with the rotated symbol.

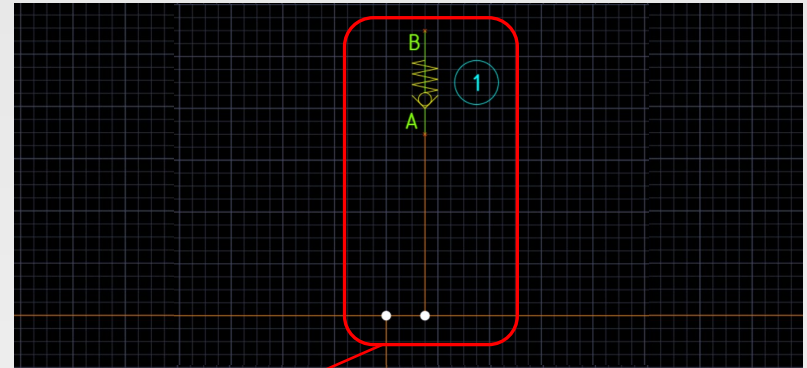
Moving Symbols

Connection Lines Rerouted on Moving a Symbol

Initial Position



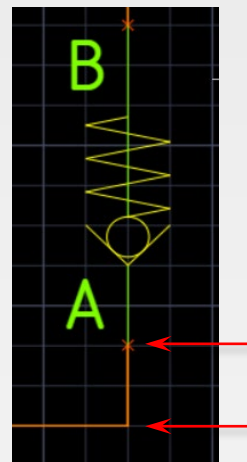
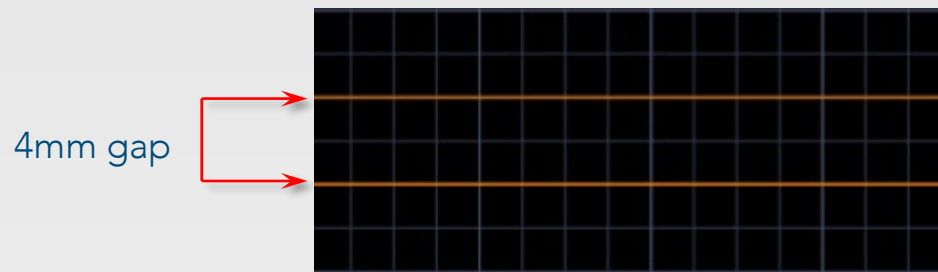
New Behavior



Connection dots and lines move along a single connection line when a directly connected symbol is moved (where applicable).

Line Spacing

4 mm gap maintained between connection lines (when possible)



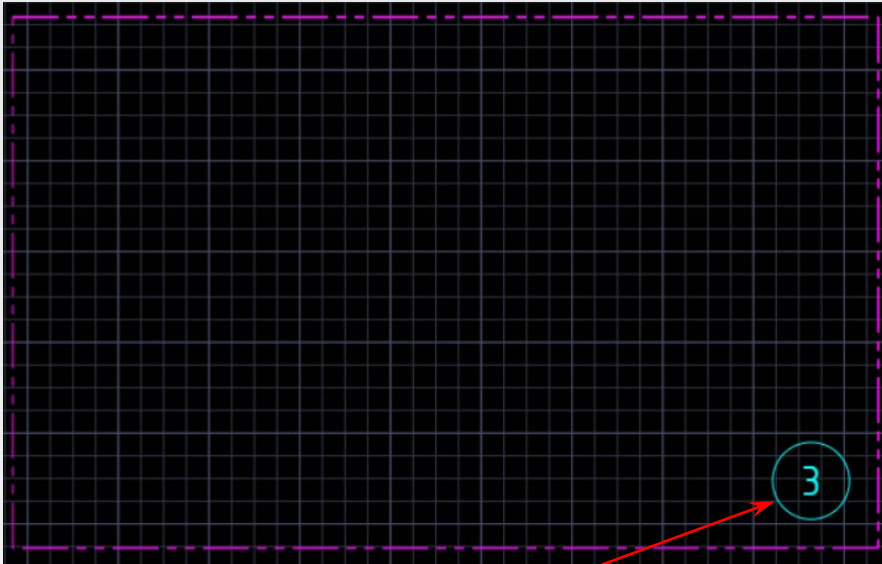
Connection lines extend 4 mm out from symbols (when possible)

Compatibility with other DWG softwares

NetSkeme is now more compatible with other DWG platforms

Compatibility: Envelope Item ID

Reassign Item ID Function for Envelope



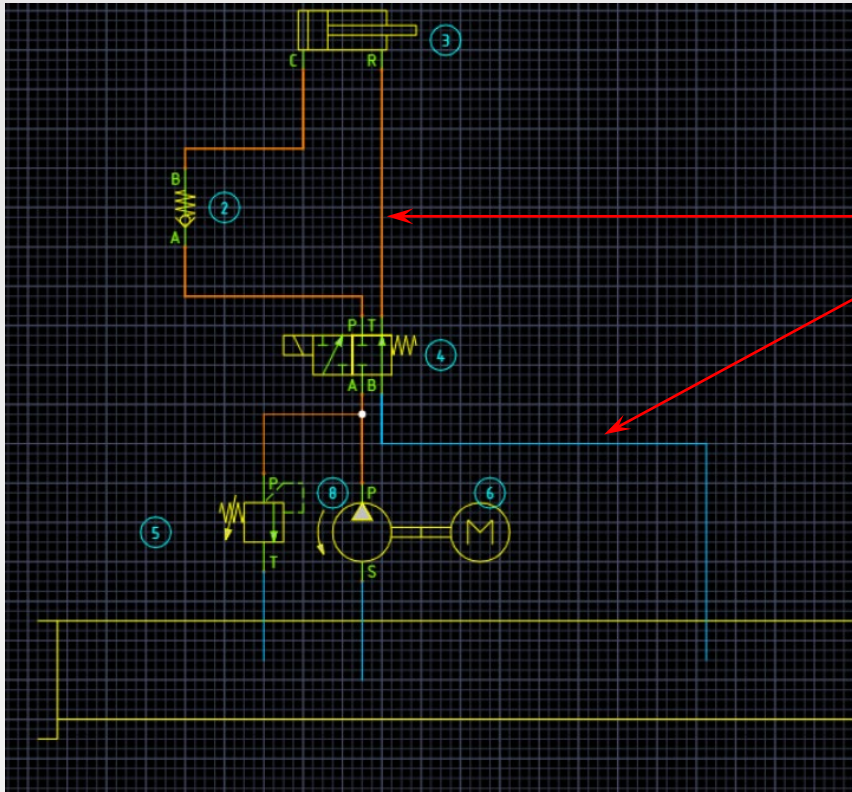
Envelope Item ID now carries over



If an Item ID is not present, use the reassign Item ID function to create Item ID for the envelope.

Compatibility: Connection Lines

Connection Lines created in other Drawing Platforms now Editable



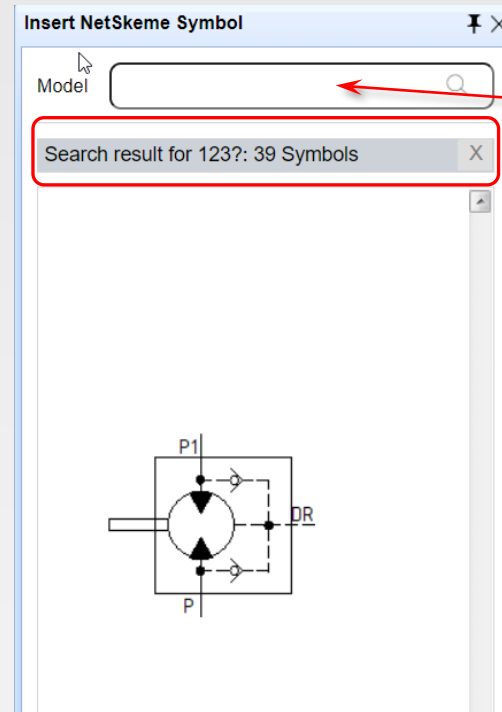
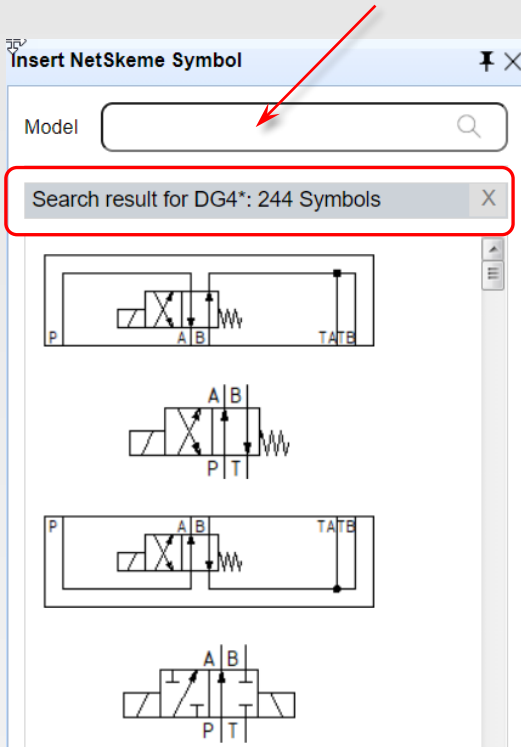
Connection lines within schematics created using other drawing platform, such as WebCAD, EasyManifold, etc. now carry over and allow editing and connection to symbols.

Enhanced Search

Search by Model Code using Wildcard Characters * and ?

Wildcard Characters

* for Series of Characters, and ? for a Single Character



Model Code Search now allows * and ? wildcard characters



Schematic on the Cloud

USA: +1 (248) 649-9550 sales@netskeme.com

Europe: +39 328 695 7001 carlo.molon@VESTusa.com

